

***Dryadella vasquezii* Luer, sp. nov.**

Ety.: Named for Roberto Vásquez Chávez of Santa Cruz, Bolivia, noted author of Bolivian cacti and orchids.

Inter species *Dryadellae* planta perparva, foliis crassissimis semiteretibus, flore purpureo punctato, sepalorum caudis brevibus crassisimis, sepali dorsalis cauda clavellata, petalis hastatis, labelli lamina bicallosa bicornuta suborbiculata.

Plant very small, epiphytic, densely caespitose; roots slender. Ramicauls erect, 2-4 mm long, enclosed by 2-3 thin, loose, tubular sheaths. **Leaf** erect, thickly coriaceous, elliptical, semiterete, subacute, 10-18 mm long, 4-6 mm wide, 3 mm thick, narrowed below into a subpetiolate base. **Inflorescence** a solitary flower borne by a pedicel 5-7 mm long, with a thin, loose floral bract 3-5 mm long; peduncle 2-3 mm long, enclosed by 2-3 tubular sheaths, from low on the ramicaul; ovary 1.5 mm long, thickly triolate; **sepals** fleshy, subcarinate, yellow-green, spotted with purple, the dorsal sepal ovate, concave, 6 mm long, 3 mm wide, the subacute apex contracted into a thick, subclavate tail 2 mm long, connate to the lateral sepals ca. 1 mm to form a sepaline cup, the lateral sepals ovate, oblique, 4.5 mm long, 2.5 mm wide, the subacute apex contracted into a thick tail ca. 1 mm long, connate 1 mm at the base, with a low, transverse callus medially above the concave base; **petals** translucent greenish white, oblong-subhastate, 1.75 mm long, 1.75 mm wide, the apex broadly obtuse, with an obtuse, rounded angle on both margins; **lip** mottled with purple, unguiculate, the blade thick, suborbicular-pyriform, 1.75 mm long, 1.5 mm wide, the apex round, entire, the base above the claw with a pair of subacute angles, the disc with a low pair of lamellae below the middle, the claw 0.75 mm long, bilobulate at the base, hinged to the apex of the column-foot; **column** green, marked with purple, 2 mm long, longitudinally winged on the distal half, the foot thick, equally long.

BOLIVIA: **Santa Cruz**: epiphytic in seasonally dry forest north of Santa Cruz, flowered in cultivation at in Santa Cruz by Roberto Vásquez, Dec. 1978, *C. Luer* 3626 (Holotype: SEL).

R. Vásquez 965 (MO), *C. Luer* illustr. 15422.

This species, endemic in lowland east central Bolivia, is characterized by very small, thickly coriaceous leaves and a gaping, purple-spotted flower. The tails of the sepals are short and thick, the tail of the dorsal subclavate; the petals are hastate; and the blade of the lip is suborbicular-pyriform with a broadly rounded, entire apex.

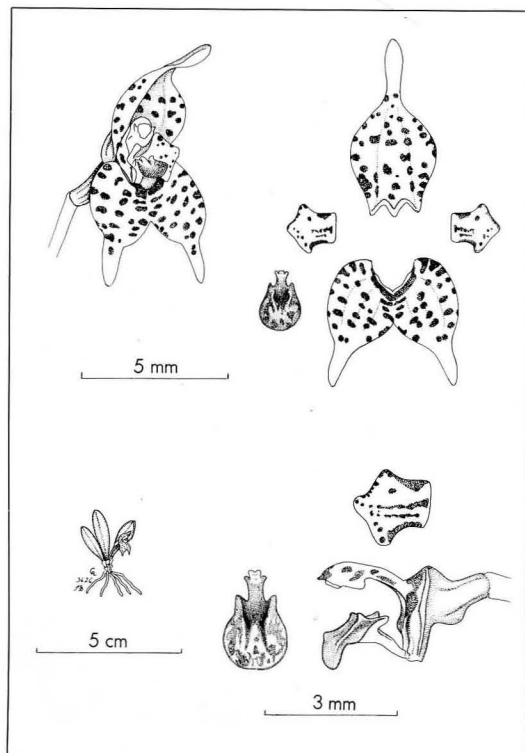


Fig. 44. *Dryadella vasquezii*